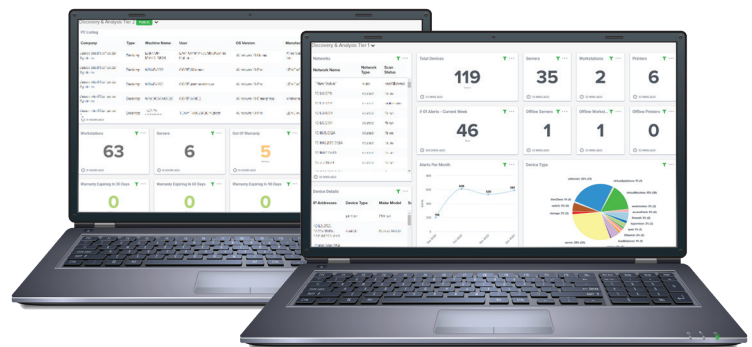


Infrastructure Discovery & Analysis

Say goodbye to spreadsheets and manual tracking. **Discovery & Analysis** provides complete network visibility, keeping you informed of risks, utilization, inventory aging, and more.

How it works:

ACS deploys an agent on one of your machines to scan all devices connected to your network.



Benefits:

- Single pane of glass view of all assets connected to your network
- Transition from manual tracking to reporting with timely data
- Outsource expensive, time-consuming scans to ACS
- Maintain up-to-date information as your network evolves
- Easily identify devices that need to be upgraded or replaced
- Facilitate planning and budgeting
- Gain peace of mind and actionable insights
- Ensure compliance

TIERS	
TIER 1	TIER 2
<p>MONTHLY OR QUARTERLY REPORTING</p> <p>ACS provides a comprehensive analysis of your network including areas of risk. Deliverables include access to all asset data, custom client dashboard, network map, and network device assessment.</p>	<p>REAL-TIME MONITORING WITH MONTHLY OR QUARTERLY REVIEW</p> <p>In addition to Tier 1 offerings, ACS implements RMM and Network Monitoring tools to deliver a holistic view of your network in real-time – no waiting around for reports. Includes Windows PC stack, server, and warranty assessments, and network alert history reports.</p>

acsltd.com | contact@acsltd.com | 855.723.3628

